

MONTHLY MEMBERSHIP PROGRESS REPORT

LOCATION NEPAL

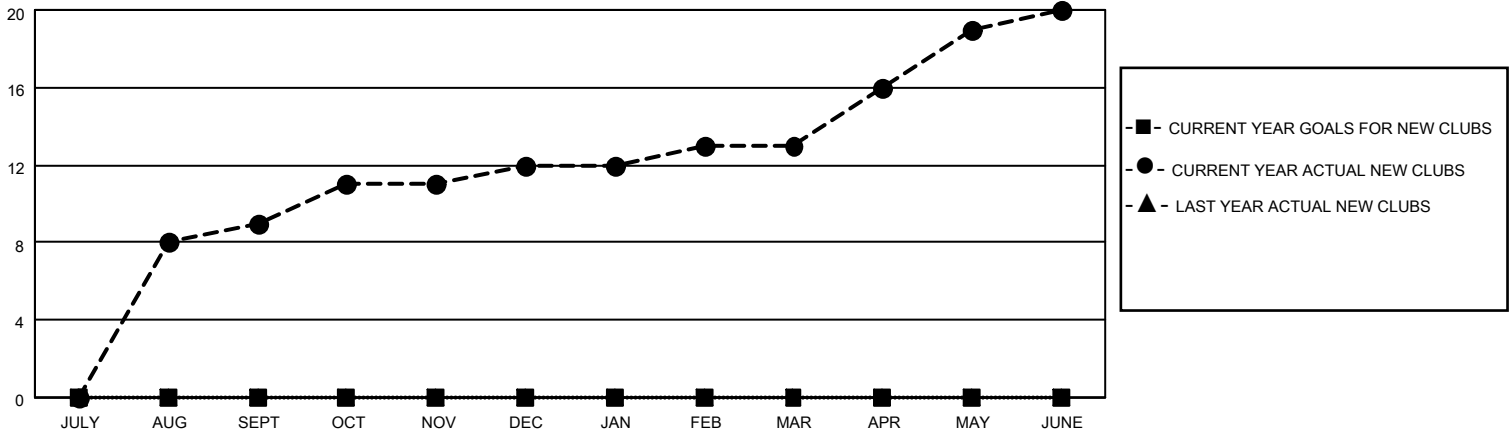
District 325 H

Results as of: 6/30/2023

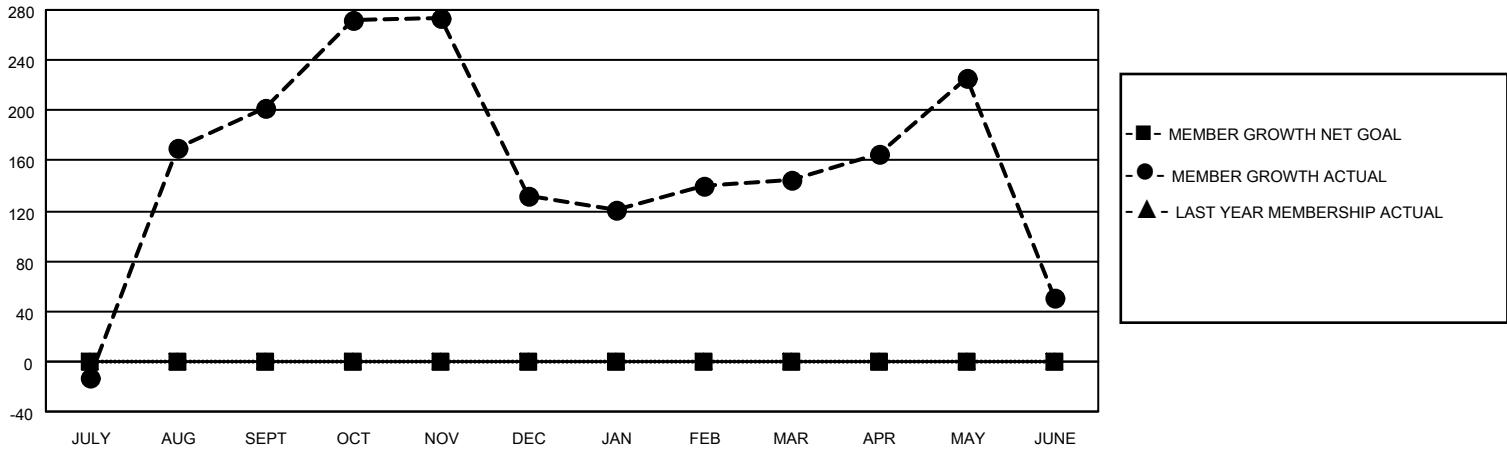
Clubs			
RESULTS FOR 2022-2023			
QUARTER	NEW CLUB GOAL	NEW CLUBS	DROPPED CLUBS
JULY/AUG/SEPT	0	9	1
OCT/NOV/DEC	0	3	4
JAN/FEB/MAR	0	1	0
APR/MAY/JUNE	0	7	3

Members			
RESULTS FOR 2022-2023			
QUARTER	MEMBER GROWTH NET GOAL	MEMBER GROWTH ACTUAL	DROPPED MEMBERS ACTUAL (including transfers)
JULY/AUG/SEPT	0	299	95
OCT/NOV/DEC	0	137	203
JAN/FEB/MAR	0	144	96
APR/MAY/JUNE	0	228	304

GOALS AND ACTUAL NEW CLUBS CUMULATIVE



GOALS AND ACTUAL MEMBERS CUMULATIVE



DROPPED CLUBS: 8

69 CLUBS OF 104 ADDED 1 OR MORE NEW MEMBERS

GENDER DISTRIBUTION

MALE	1,479 (69.18%)
FEMALE	659 (30.82%)
NON BINARY	0 (0.00%)
PREFER NOT TO ANSWER	0 (0.00%)

DROPPED MEMBERS

[CLICK HERE FOR CUMULATIVE MEMBERSHIP DATA](#)

DECEASED	1
CLUB CANCELLED	194
OTHER	500
TOTAL	695

TOTAL FAMILY UNIT MEMBERS 1,143

FAMILY MEMBERS PAYING HALF DUES 704